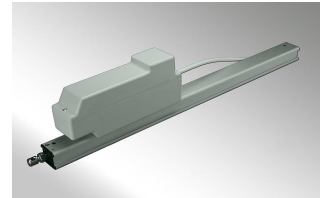


## Rack and Pinion Actuator

This rack and pinion actuator is unbeatable with applications in the industrial area. It is equipped with all characteristics that can be expected of a modern actuator and shines with low current consumption and an effective power utilization. This actuator is quiet in operation and can be linked by a rod to control a slave mechanical drive. This makes it ideal for applications with heavy duty windows or large skylights. Also available in 230 V version (separate sheet).



## Technical Data:

Rack and pinion actuator Type EA-SZ Item number:	
Nominal voltage:	24 V DC (- 15 % / + 25 %)
Nominal current:	1.0 A
Stroke lengths:	350, 550, 750, 1.000 mm
Max force:	800 N
Cut off:	Integrated electronic overload cut off and contact "F" for sequence controlling
Speed:	9 mm/sec
Housing (LxWxH):	Rack housing: anodized aluminium E6/EV1, grey Motor housing: plastic Stroke + 220 mm x 54 x 120 mm
Protection class:	IP 55
Switch on duration:	ED 20 %
Temperature resistance:	300 ° C for 30 minutes according to EN 12101/2
Connecting cable:	Silicone 3 x 0.75 mm <sup>2</sup> , light grey, length 1.5 m
Brackets:	Upper and lower bracket / stepless adjustable in single application
Weight:	ca. 3.0 kg

## Article

Nominal force 800 N - I 1.0 A Speed with nominal load 9 mm/sec		
	Typ	Item number
	EA-SZ 24/80/350	M2 1080
	<b>Characteristics:</b> 800 N Force / 350 mm Stroke	
	EA-SZ 24/80/550	M2 1081

<b>Characteristics:</b>	800 N Force / 550 mm Stroke	
EA-SZ 24/80/750		M2 1082
<b>Characteristics:</b>	800 N Force / 750 mm Stroke	
EA-SZ 24/80/1000		M2 1090
<b>Characteristics:</b>	800 N Force / 1000 mm Stroke	

## Connecting rod to link SZ and SZ-M

Aluminium tube, Note: No other lengths available!

Accessories	Item number
EA-SZ-VERBIND-1 (Length 960 mm)	M2 1083 A
EA-SZ-VERBIND-2 (Length 1.960 mm)	M2 1083 B

## Slave mechanical drive type EA-SZ-M

with eye bolt d = 6 mm Housing (L x W x H): anodized aluminium E6/EV1, grey (Stroke + 220 mm x 40 x 30 mm) Stroke lengths: 350, 550, 750, 1000 mm Weight: Approx 2 kg incl. Brackets: Upper and lower bracket (Note! Brackets for SZ and SZ-M are different) Bearing point of brackets is not adjustable

Accessories	Item number
EA-SZ-M-350	M2 1083
EA-SZ-M-550	M2 1084
EA-SZ-M-750	M2 1089
EA-SZ-M-1000	M2 1091