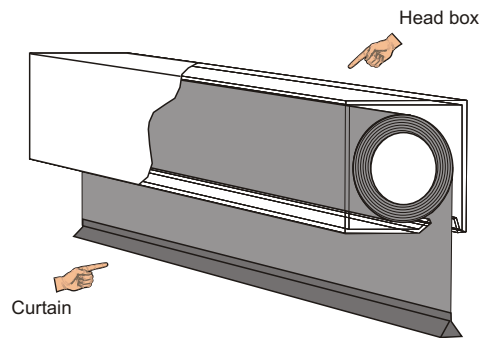


Product-
description

Automatic smoke retarding curtain

Type SI-BLE-SD3



Automatic textile smoke retarding curtains are applied in order to control the spread of fumes at the inside of buildings and to keep the escape routes smoke-free in interaction with a smoke and heat exhaust vent system. By means of gravitation automatic textile smoke curtains get self-acting in case of fire. The system can be triggered by a SHEV system, a fire alarm system or internal fire detection devices.

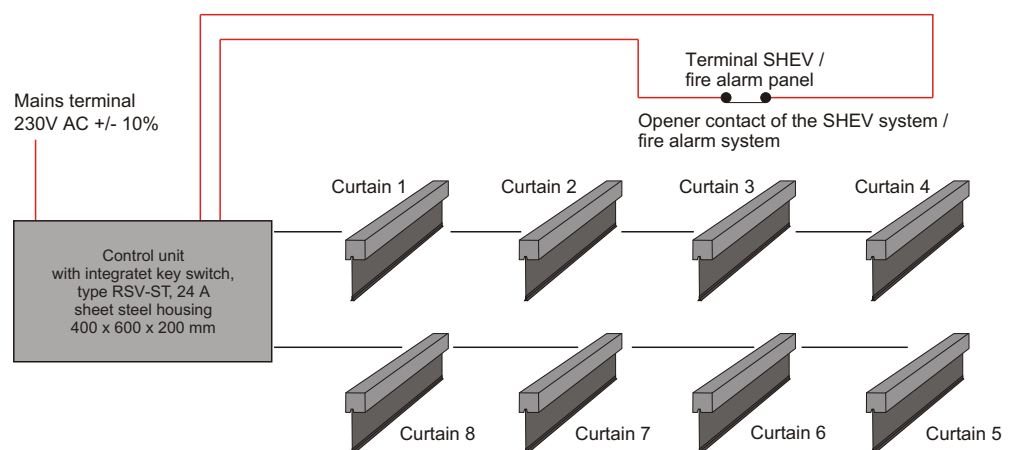
Advantages of automatic textile smoke retarding curtains compared to permanently installed smoke retarding curtains:

- ✓ In waiting position the smoke retarding curtain is flush with the ceiling construction and consequently it is hidden for the eyes of the beholder.
- ✓ No architectural restrictions thanks to a compact and simple construction.
- ✓ The smoke retarding curtain provides an optimum smoke exhaustion.
- ✓ Because of the low own weight there don't appear static problems.
- ✓ A qualified partner for your particular building projects with the ideal solution from one source.



Applications

The textile smoke retarding curtain primarily is made up of a head box with a roller and a curtain, a 24 V motor with external cut off, a bottom bar and an appropriate control panel with emergency current supply.



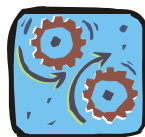
We willingly would do the complete planning of accomplishing the smoke retarding curtain and also the appropriate control technology for you.



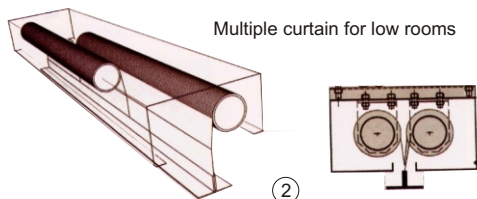
Applications



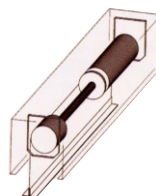
Order note

Technical
DataText for
invitation
of tenders

Installation options

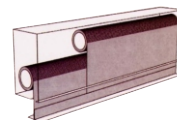
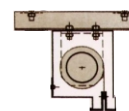


Multiple curtain for low rooms



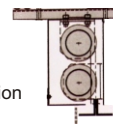
Single curtain max. width 6 m

①



Multiple curtain for narrow installation

③



Dimension scheme:

For smoke retarding curtain in standard design with a motor ①
(smoke retarding curtain ② and ③ in standard design).

Fall height of smoke retarding curtain (m)	Width of the particular smoke retarding curtains (m) (max. curtain expanse 30 m²)										
	1,0	1,5	2,0	2,5	3,0	3,5	4,0	4,5	5,0	5,5	6,0
1,0	✓	✓	✓	✓	✓	✓	✓	✓	✓	✓	✓
1,5	✓	✓	✓	✓	✓	✓	✓	✓	✓	✓	✓
2,0	✓	✓	✓	✓	✓	✓	✓	✓	✓	✓	✓
2,5	✓	✓	✓	✓	✓	✓	✓	✓	✓	✓	✓
3,0	✓	✓	✓	✓	✓	✓	✓	✓	✓	✓	✓
3,5	✓	✓	✓	✓	✓	✓	✓	✓	✓	✓	✓
4,0	✓	✓	✓	✓	✓	✓	✓	✓	✓	✓	✓
4,5	✓	✓	✓	✓	✓	✓	✓	✓	✓	✓	✓
5,0	✓	✓	✓	✓	✓	✓	✓	✓	✓	✓	✓
5,5	✓	✓	✓	✓	✓	✓	✓	✓	✓	✓	✗
6,0	✓	✓	✓	✓	✓	✓	✓	✓	✓	✓	✗

Control unit

Input voltage: 230 V 50 Hz ±10%
Output voltage: 24 V DC
max. current: 24 A
Housing: Sheet steel housing

Dimensions (W x H x D): 400 x 600 x 200 mm
Emergency current supply: lead accu 7,2 Ah
Test run: Key switch integrated

Smoke curtain (fabric, head box)

Textile: aluminium polymeric coated glass fabrics
Colour: silver grey
Weight: 450 g/m²
Fire resistance duration: 2 h at 600° C (prEN 12101-1)
max. dimension: 30 m² per roll
Mounting: Ceiling / Wall

Head box: Steel, hot-dip galvanized
Dimensions: 150 x 150 mm (180 x 180 mm)
Unwind: by gravity (gravity fail save)
Rewind: via integrated integrierten pipe engine, 24 V DC, 3 A with electronic load cut-off

Automatic smoke retarding curtains **SIMON RWA SYSTEME®**, type SI-BLE-SD3 proved according to prEN 12101-1 and approved by the building authorities for accomplishing predefined smoke exhaust areas in buildings. Design: Internal width of the sections to be separatedmm, unwinding lengthmm. The curtain fabrics is made up from coated fiber glass cloth. The unwind mechanism is located in a zincked housing. Unwinding happens by gravity (gravity fail safe). The triggering line is monitored for short circuit and interruption. Via the integrated 24 V - motor the curtain gets rewinded.

Cut-off happens via an electronic over load cut-off.
 Emergency current supply via lead accu.

✉ e-mail: info@simon-rwa.de